

Maître d'ouvrage : **SARL TG**

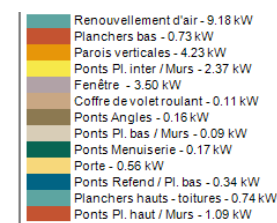
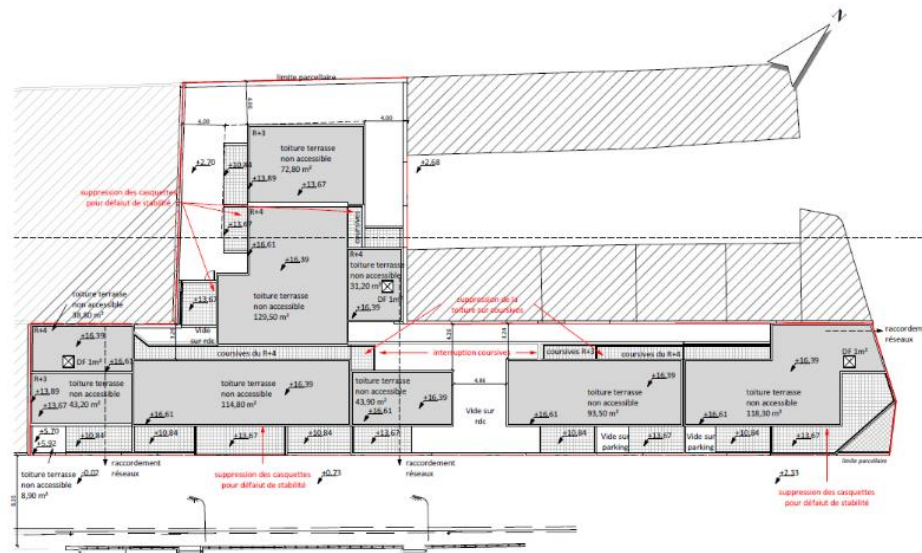
Architecte : **ATELIER D'ARCHITECTE DAMIEN EUZET**

Avancement : **Phase EXE**

SUrt : **4 000 m²**

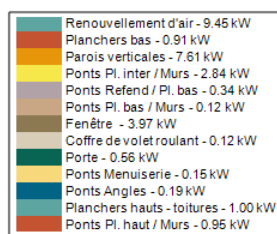
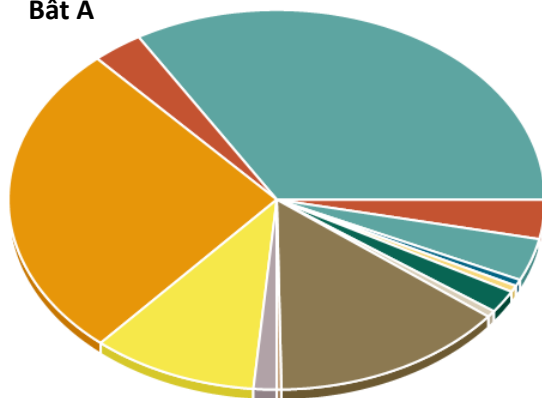
Consommation d'énergie : **Bât A 42.90 kWhEP/m²**
Bât B 40.3 kWhEP/m²
Bât C 48.10 kWhEP/m²

Besoin bioclimatique : **Bât A 41.90 kW** (Bbio max : 42 kW)
Bât B 30.50 kW (Bbio max : 42 kW)
Bât C 33.90 kW (Bbio max : 42 kW)

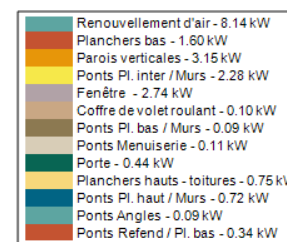
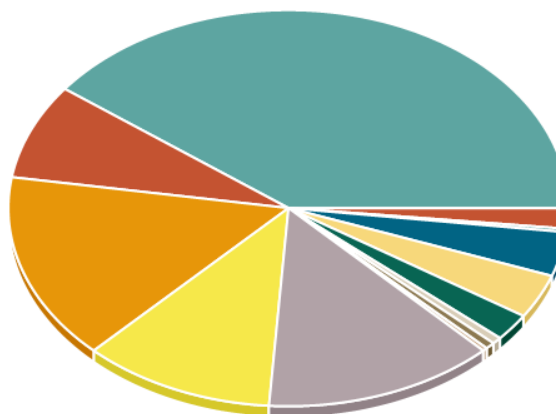


Bilan thermique de la résidence

Bât A

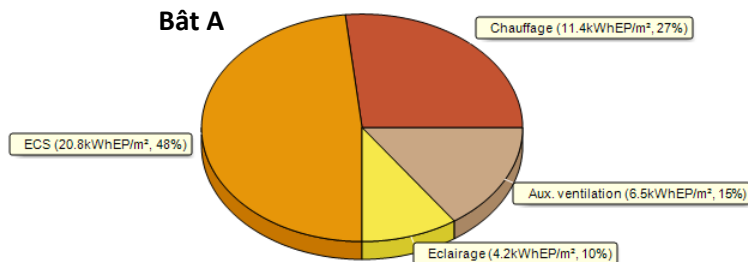


Bât C

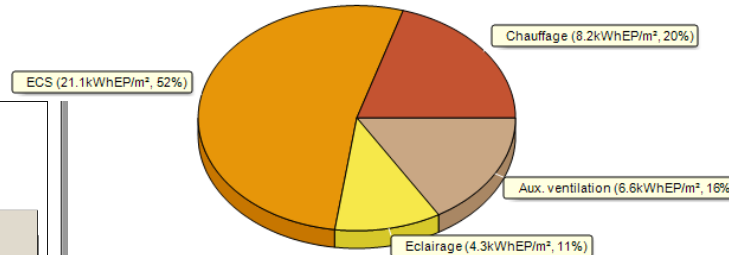


Répartition des consommations énergétiques (kWhEP/m².an)

Bât A



Bât B



Bât C

